



Mike Manufacturing Corp.

STEP DOWN AWNING COMPONENTS

FLAT & W-PAN ROOF SYSTEMS

PORCH & DECK RAILING

7214 Murthum Avenue
Warren, MI 48092

Phone: (586)-759-1140 | Fax: (586)-759-2656

www.MikeManufacturing.com

Mike Manufacturing Corp.

INTRODUCTION & TERMS

ABOUT US

Thank you for choosing Mike Manufacturing brand aluminum products. In business since 1975 we have built a reputation on producing top quality products while exceeding customer expectations in service and value. All products are manufactured in our Warren, Michigan facility and distributed throughout the Midwest via our own truck fleet. Please contact us directly with any product or engineering questions.

TERMS

Material thickness: All material thickness listed are subject to industry tolerances

Shipping: All orders are FOB Warren, Michigan unless delivered via our trucks

Shipping damages: Please inspect all shipments at time of delivery and report any damages

Credit: Terms are 1% 10, Net 30. (1% invoice discount if paid within 10 days)

COLORS



Polar
White



Bronze



Ivory



Cadet Grey



Autumn
Brown



Antique
White



Raven
Black



Ivy Green



Clay



Mocha Tan



Hunter Red



Terra Cotta



Heron Blue



7214 Murthum Avenue
Warren, MI 48092

Phone: 586-759-1140

Mike Manufacturing Corp.

INDEX

04	STEP DOWN AWNING COMPONENTS
05	ROLL FORMED SQUARE TUBING
06	CHANNEL
07	AWNING RAFTER
08	ANGLES
09	ALUMINUM EXTRUSIONS
10	GUTTER
11	SCROLL COLUMNS
12	SCROLLS
13-15	FLAT & W-PAN ROOF SYSTEMS
16-17	INSULATED ROOF SYSTEMS
18	GUTTER ACCESSORIES
19	TUBE MOUNTING SHOES
20	COLUMN MOUNTING SHOES
21	FRONT FASCIA ACCESSORIES
22	FOAM ACCESSORIES
23	BUILDING PRODUCTS
24	PORCH RAILING SYSTEMS



7214 Murthum Avenue
Warren, MI 48092

Phone: 586-759-1140

Mike Manufacturing Corp.

STEP DOWN AWNING COMPONENTS

3X11 SHEET

3X11 AWNING SHEET

3" Step with 11 3/8" coverage. Available in standard & rough saw texture. 20' stock length, any other lengths custom made to order.

Part: D-70 | Regular
D-70RS | Rough saw

Box qty: 30 Sheets
Length: 20' or custom



11" STARTER

AWNING STARTER

For use as a starter course for all 3X11 Awning sheet. Available in standard or rough saw texture

Part: D-71 | Regular
D-71RS | Rough saw

Box qty: 25 Pieces
Length: 20'



11" STARTER

AWNING STARTER | DAISY

For use as a starter course for all 3X11 Awning sheet. Available in standard or rough saw texture. Features stamped daisy pattern.

Part: D-72 | Regular
D-72RS | Rough saw

Box qty: 25 Pieces
Length: 20'



FRINGE

AWNING FRINGE

Standard or reverse lip. Available in standard or rough sawn texture.

Part: D-43 | Regular
D-43RS | Rough saw

Box qty: 30 Pieces
Length: 12' & 15'



Mike Manufacturing Corp.

ROLL FORMED SQUARE TUBING

SQUARE TUBE

1 ½" SQUARE ROLL FORMED TUBE

Square lock seam tubing with .032 material thickness and baked on paint finish.

Part: D-41WH | White
D-41BL | Black
D-41BN | Brown

Box qty: 25 Pieces
Length: 24'



SQUARE TUBE

1" SQUARE ROLL FORMED TUBE

Square lock seam tubing with .032 material thickness and baked on paint finish.

Part: D-1WH | White
D-1WH | White

Box qty: 25 Pieces
Length: 21' & 24'



SQUARE TUBE

1" SQUARE ROLL FORMED TUBE | PRE-CURVED

Square lock seam tubing with .032 material thickness and baked on paint finish. Stretch bent to awning slope.

Part: D-2WH | White
D-2WH | White

Box qty: 25 Pieces
Length: 5'



Mike Manufacturing Corp.

CHANNEL

CHANNEL

.040 EMBOSSED U CHANNEL

Roll formed 1" x 3 3/4" channel in .040 material thickness. Featuring baked on paint finish.

Part: D-29WH | White

Box qty: 24 Pieces

Length: 21'



CHANNEL

.040 FAT JACK U CHANNEL

Roll formed 1" x 3 3/16" channel in .040 material thickness. Featuring baked on paint finish.

Part: D-30WH | White

Box qty: 28 Pieces

Length: 21'



CHANNEL

1" U CHANNEL

Roll formed 1" x 1" channel in .040 material thickness. Featuring baked on paint finish.

Part: D-4WH | White

Box qty: 40 Pieces

Length: 20'



CHANNEL

1/2" U CHANNEL

Roll formed 1/2" x 1/2" channel in .025 material thickness. Featuring baked on paint finish.

Part: D-18WH | White

Box qty: 84 Pieces

Length: 15'



Mike Manufacturing Corp.

AWNING RAFTER

.032 RAFTER

.032 EMBOSSED RAFTER

1 ¼" X 3 ½" Embossed structural rafter with .032 aluminum wall thickness.

Part: D-42 **Box qty:** 14 Pieces **Length:** 20' & 24'



.040 RAFTER

.040 EMBOSSED RAFTER

1 ¼" X 3 ½" Embossed structural rafter with .040 aluminum wall thickness.

Part: D-21 **Box qty:** 14 Pieces **Length:** 21' & 24'



.040 RAFTER

.040 FAT JACK RAFTER

1 ½" X 3" Structural rafter with .040 aluminum wall thickness.

Part: D-57 **Box qty:** 12 Pieces **Length:** 21' & 24'

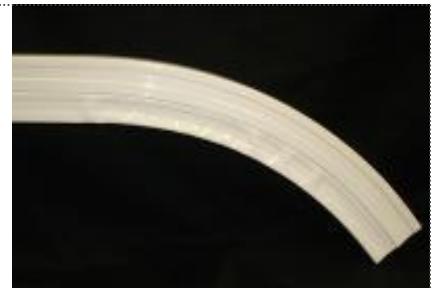


.040 RAFTER

.040 FAT JACK RAFTER | PRE-CURVED

1 ½" X 3" Structural rafter with .040 aluminum wall thickness. Stretch bent to awning slope.

Part: D-58 **Box qty:** 15 Pieces **Length:** 6' to 18'



Mike Manufacturing Corp.

ANGLES

ANGLE

.040 HANGING ANGLE

Roll formed 1 1/8" x 3/4" angle in .040 material thickness. Featuring baked on paint finish.

Part: D-34 | White

Box qty: 50 Pieces

Length: 20'



ANGLE

.032 HANGING ANGLE

Roll formed 1 1/8" x 3/4" angle in .032 material thickness. Featuring baked on paint finish.

Part: D-32 | White

Box qty: 50 Pieces

Length: 20'



ANGLE

RIVET ANGLE

Roll formed 9/16" x 9/16" angle in .025 material thickness. Featuring baked on paint finish.

Part: D-3WH | White

Box qty: 134 Pieces

Length: 15'



Mike Manufacturing Corp.

ALUMINUM EXTRUSIONS

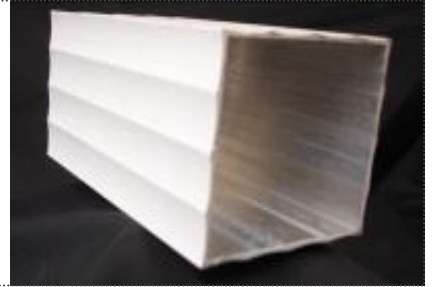
SQUARE TUBE

3" SQUARE EXTRUDED TUBE

Square extruded aluminum 3" x 3" tube with .062 wall thickness. Features baked on paint finish.

Part: D-36WH | White
D-36BL | Black
D-36BN | Brown

Box qty: 8 Pieces
Length: 21' & 24'



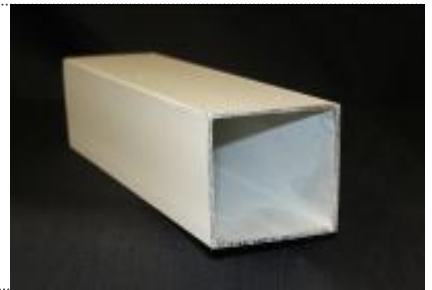
SQUARE TUBE

1 1/2" SQUARE EXTRUDED TUBE

Square extruded aluminum 1 1/2" x 1 1/2" tube with .050 wall thickness. Features baked on paint finish.

Part: D-77WH | White
D77BL | Black

Box qty: 25 Pieces
Length: 21' & 24'



SQUARE TUBE

3/4" SQUARE EXTRUDED TUBE

Square extruded aluminum 3/4" x 3/4" tube with .050 wall thickness. Features baked on paint finish.

Part: TE75WH | White
TE75BL | Black
TE75BN | Brown

Box qty: 20 Pieces
Length: 10'



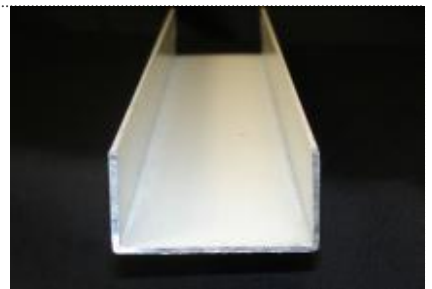
CHANNEL

1 1/2" EXTRUDED CHANNEL

Extruded 1" x 1 1/2" channel in .025 material thickness. Featuring baked on paint finish.

Part: D-16WH | White

Box qty: 20 Pieces
Length: 20'



Mike Manufacturing Corp.

GUTTER

AWNING

FLOW AWAY AWNING GUTTER

Roll formed .024 aluminum awning gutter

Part: D-52WH | White

Box qty: 20 Pieces

Length: 20' & 25'



MOBILE HOME

MOBILE HOME GUTTER

Roll formed .024 aluminum gutter designed to be proportional in size to mobile home

Part: D-25WH | White
D-25BN | Brown

Box qty: 24 Pieces

Length: 24'



AWNING

FLOW AWAY AWNING GUTTER END CAPS

End caps for flow away aluminum awning gutter

Part: FAGCWH | White
FAGCBN | Brown

Box qty: Sold in pairs

Length: N/A



MOBILE HOME

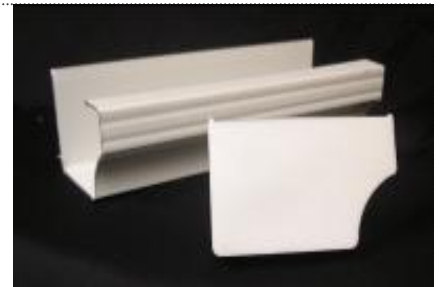
MOBILE HOME GUTTER END CAPS

Plastic end caps designed to match profile of mobile home and provide water tight seal

Part: P-10WH | White
P-10BN | Brown

Box qty: Sold in pairs

Length: N/A



Mike Manufacturing Corp.

SCROLL COLUMNS

COLUMNS

FLAT COLUMN

Pre assembled column constructed from 1 1/2" extruded aluminum tubing, top and bottom mounting shoes and three scrolls per column.

Part: C-36WH | White
C-36BL | Black
C-36BN | Brown

Length: 9' Stock or custom as required



COLUMNS

CORNER COLUMN

Pre assembled column constructed from 1 1/2" extruded aluminum tubing, top and bottom mounting shoes and six scrolls per column.

Part: C-37WH | White
C-37BL | Black
C-37BN | Brown

Length: 9' Stock or custom as required



Mike Manufacturing Corp.

SCROLLS

SCROLLS

EXTRUDED SCROLLS

6" x 18" Single scroll

Part: C-11WH | White
C-11BL | Black
C-11BN | Brown

Box qty: 50 Pieces
Length: 6" x 18"



SCROLLS

ROLL FORMED SCROLLS

5 1/2" x 19" Single scroll

Part: C-15WH | White
C-15BL | Black
C-15BN | Brown

Box qty: 50 Pieces
Length: 5 1/2" x 19"



SCROLLS

ROLL FORMED SCROLL STOCK

Roll formed scroll stock to bend your own scrolls. Cut with decorative curved end.

Part: D-15WH | White
D-15BL | Black
D-15BN | Brown

Box qty: 100 Pieces
Length: 52"



Mike Manufacturing Corp.

FLAT & W-PAN ROOF SYSTEMS

BACK HANGER

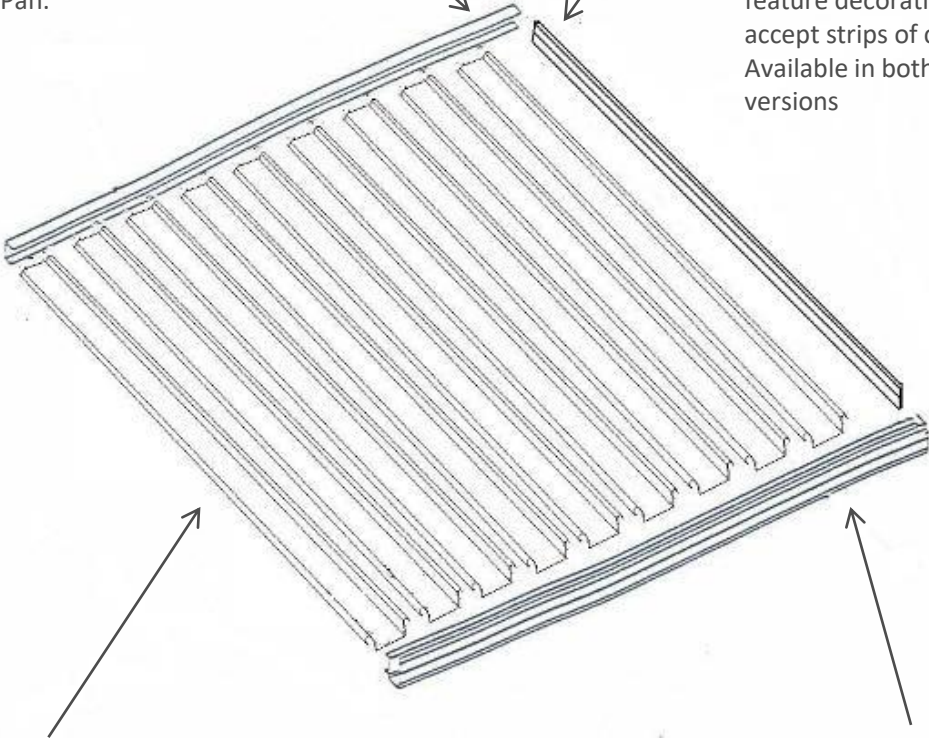


Locking male and female hanger can be used with Flat and W Pan.

SIDE FASCIA



Side fascia designed for use with Flat and W Pan roofs feature decorative recesses to accept strips of color band. Available in both 5" and 6" versions



STEEL W-PAN



8" & 12" FLAT PAN



GUTTER FASCIA



7214 Murthum Avenue
Warren, MI 48092

Phone: 586-759-1140

Mike Manufacturing Corp.

FLAT & W-PAN PATIO COVERS

FLAT PAN

8" ALUMINUM FLAT PAN

Interlocking flange pans are 8" wide by 3" deep with baked on paint finish.

Part: D-11 | .025 Thickness
D-12 | .032 Thickness
D-13 | .040 Thickness

Box qty: 10 Pieces
Length: Made to order



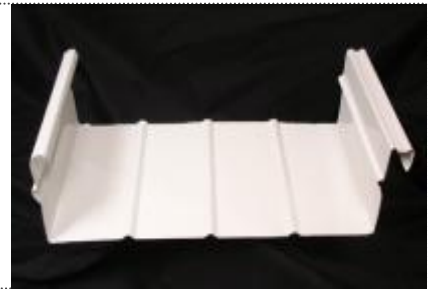
FLAT PAN

12" ALUMINUM FLAT PAN

Interlocking flange pans are 12" wide by 3" deep with two side baked on paint finish.

Part: D-55 | .032 Thickness
D-56 | .040 Thickness

Box qty: 10 Pieces
Length: Made to order



W-PAN

ALUMINUM W-PAN

Interlocking aluminum W Pan with 16" of coverage by 3 1/2" tall with two side baked on paint finish.

Part: D-93 | .032 Thickness
D-94 | .036 Thickness

Box qty: Made to order
Length: Made to order



W-PAN

STEEL W-PAN

Interlocking galvanized steel W Pan with 16" of coverage by 3 1/2" tall with two side baked on paint finish.

Part: D-96 | 23 GA Galv steel
D-95 | 25 GA Galv steel

Box qty: Made to order
Length: Made to order



Mike Manufacturing Corp.

FLAT & W-PAN ROOF COMPONENTS

ROOF SYSTEMS

FRONT GUTTER FASCIA

Extruded aluminum gutter fascia with decorative sleeve to accept color band. For widths greater than 24' see accessories page for splice plate.

Part: D-100WH | White
D-100BN | Brown

Box qty: Each
Length: 20' & 24'



ROOF SYSTEMS

SIDE C FASCIA

Extruded aluminum side fascia with decorative sleeves to accept color band.

Part: D-101WH | White
D-101BN | Brown

Box qty: Each
Length: 20' & 24'



ROOF SYSTEMS

WALL HANGER

Extruded aluminum wall hanger features a sloped pitch for proper drainage. Works with 8" & 12" Flat pans and insulated roofs.

Part: D-117WH | White

Box qty: Each
Length: 20' & 24'



ROOF SYSTEMS

MALE & FEMALE WALL HANGER

Extruded aluminum male & female wall hanger lock together and allows you to set the pitch of the roof. Works with 8" & 12" Flat pan, W-Pan and insulated roofs.

Part: D-119WH | White

Box qty: Each
Length: 20' & 24'



Mike Manufacturing Corp.

INSULATED ROOF SYSTEMS

BACK HANGER

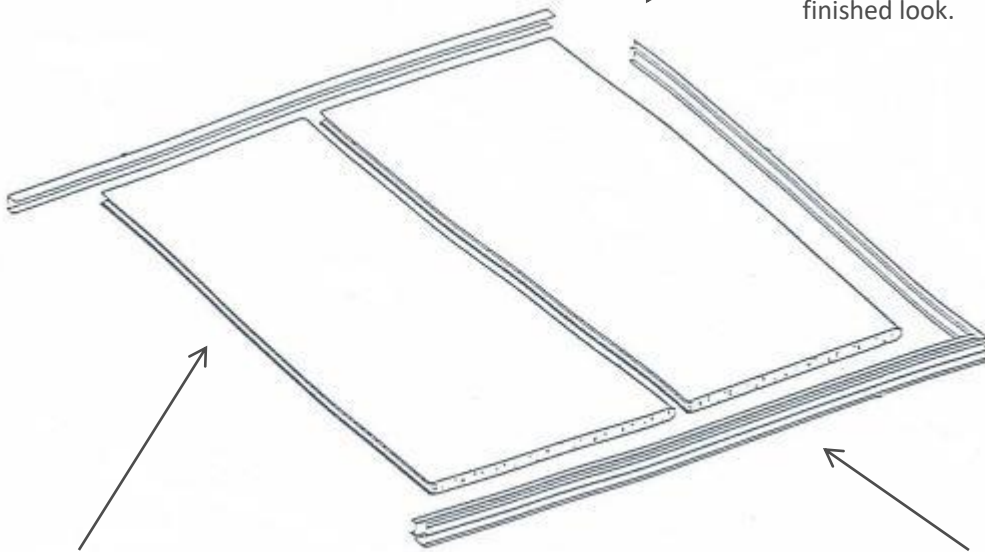


Foam panels slip into the hanger after mounting to the wall.

SIDE FASCIA



Side fascia covers the panels and secures to front gutter fascia for a finished look.



FOAM ROOF PANEL



Interlocking foam roof panels provide water tight seal and rigidity.

GUTTER FASCIA



Front gutter fascia is designed to drain water and give the roof a finished look.

Mike Manufacturing Corp.

INSULATED ROOF COMPONENTS

ROOF SYSTEMS

FOAM ROOF PANEL

3" Thick interlocking foam roof panel. Available in 4' width increments and 8' through 18' projections. Panels also available with 'Fan Beam' for running wires.

Part: S-300 | White
SS-300 | Sandstone

Width: 4'
Length: 8' to 18'



ROOF SYSTEMS

FRONT GUTTER FASCIA

Extruded aluminum gutter fascia with decorative sleeve to accept color band. For widths greater than 24' see accessories page for splice plate.

Part: KE-4936 | White

Box qty: Each
Length: 20' & 24'



ROOF SYSTEMS

SIDE C FASCIA

Extruded aluminum side fascia with decorative sleeves to accept color band.

Part: KE-4935 | White

Box qty: Each
Length: 21' & 23'



ROOF SYSTEMS

WALL HANGER

Extruded aluminum wall hanger features a sloped pitch for proper drainage. Works with 8" & 12" Flat pans and insulated roofs.

Part: D-117WH | White

Box qty: Each
Length: 20' & 24'



Mike Manufacturing Corp.

GUTTER ACCESSORIES

ACCESSORIES

3" GUTTER DOWNSPOUT

3" Aluminum gutter downspout for use with gutter fascia

Part: D-210WH | White

Box qty: Sold individually
Length: 10'



ACCESSORIES

3" DOWNSPOUT OUTLET

3" Downspout outlet. Sold individually or in box quantities.

Part: D-211

Box qty: Sold individually
Length: N/A



ACCESSORIES

DOWNSPOUT STRAPS

Aluminum strap for 3" downspout

Part: D-213WH | White
D-213BN | Brown

Box qty: Sold individually
Length: N/A



ACCESSORIES

3" DOWNSPOUT ELBOW

Aluminum elbow for use with 3" downspout tube

Part: D-212WH | White
D-212BN | Brown

Box qty: Sold individually
Length: N/A



Mike Manufacturing Corp.

TUBE MOUNTING SHOES

ACCESSORIES

SHOES FOR 1" SQUARE TUBING

For use with roll formed and extruded tubing. Features external mounting ears and cast aluminum construction. Sold individually or in box quantities.

Part: C-14

Box qty: 50 Pieces

Length: N/A



ACCESSORIES

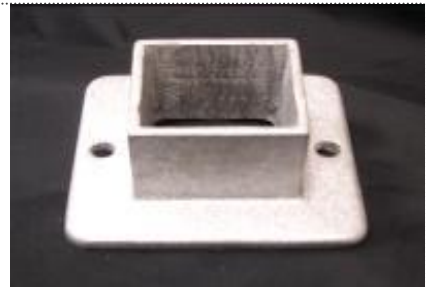
SHOES FOR 1 1/2" SQUARE TUBING

For use with roll formed and extruded tubing. Features external mounting ears and cast aluminum construction. Sold individually or in box quantities.

Part: C-30

Box qty: 50 Pieces

Length: N/A



ACCESSORIES

SHOES FOR 3" SQUARE TUBING

For use with roll formed and extruded tubing. Features external mounting ears and cast aluminum construction. Sold individually or in box quantities.

Part: C-31

Box qty: 50 Pieces

Length: N/A



ACCESSORIES

SHOES FOR 3" SQUARE TUBING

For use with roll formed and extruded tubing. Features internal mounting ears and cast aluminum construction. Sold individually or in box quantities.

Part: C-138

Box qty: 50 Pieces

Length: N/A



Mike Manufacturing Corp.

COLUMN MOUNTING SHOES

ACCESSORIES

FLAT COLUMN SHOES

Cast aluminum mounting shoes for flat columns. Available to fit 1" & 1 1/2" square tubing,

Part: C-13 | 1" Tube
C-29 | 1 1/2" Tube

Box qty: 50 Pieces
Length: N/A



ACCESSORIES

CORNER COLUMN SHOES

Cast aluminum mounting shoes for corner columns. Available to fit 1" & 1 1/2" square tubing,

Part: C-12 | 1" Tube
C-28 | 1 1/2" Tube

Box qty: 50 Pieces
Length: N/A



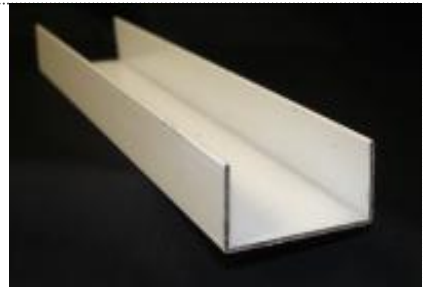
ACCESSORIES

LINEAL U SHOE

9" x 1 1/2" Extruded aluminum mounting shoe for use with flat columns and 1 1/2" tubing.

Part: D-16

Box qty: Sold individually
Length: 9"



Mike Manufacturing Corp.

FRONT FASCIA ACCESSORIES

ACCESSORIES

INSULATED ROOF SPLICE PLATE

Extruded aluminum splice plate is required anytime you have a width greater than 24' or join two pieces of fascia together

Part: S-208

Box qty: Sold individually

Length: N/A



ACCESSORIES

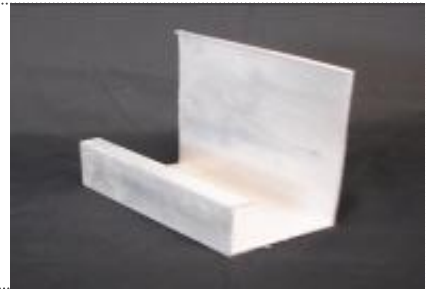
FLAT & W-PAN ROOF SPLICE PLATE

Extruded aluminum splice plate is required anytime you have a width greater than 24' or join two pieces of fascia together

Part: D-88 for 5" Fascia
D-102 for 6" Fascia

Box qty: Sold individually

Length: N/A



ACCESSORIES

COLOR BAND FOR FRONT AND SIDE FASCIA

Colored band of aluminum to slide into recess in front fascia of gutter to add accenting color to roof.

Part: D-91WH | White

Box qty: N/A

Length: Sold per foot



Mike Manufacturing Corp.

FOAM ACCESORIES

ACCESSORIES

FOAM BACKER FOR WALL HANGER

Self adhesive multi purpose foam backer can go between wall of home and aluminum wall hanger

Part: D-165

Box qty: N/A

Length: Sold by the foot



ACCESSORIES

FOAM GUTTER DAMS

Flat pan gutter dams. Sold individually or in box quantities

Part: D-122

Box qty: Each

Length: N/A



ACCESSORIES

PEST STOPS FOR W-PAN

Foam plugs used to fill the void in W-Pan awning ends. Sold individually or in box quantities.

Part: D-123

Box qty: Each

Length: N/A



ACCESSORIES

PEST STOPS FOR FLAT PAN

Foam plugs used to fill the void in Flat pan awning ends. Sold individually or in box quantities.

Part: D-89

Box qty: Each

Length: N/A



Mike Manufacturing Corp.

BUILDING PRODUCTS

SIDING

GALVANIZED SIDING STARTER

Galvanized siding starter formed with deep beads and .015 steel to maintain rigidity. Heavy coating weight prevents corrosion.

Part: SS-100G

Box qty: 50 Pieces

Length: 10'



SIDING

ALUMINUM SIDING STARTER

Aluminum siding starter formed with deep beads and .019 aluminum to maintain rigidity

Part: SS-100A

Box qty: 50 Pieces

Length: 10'



REINFORCING

HAT SECTION

Multi purpose reinforcing hat section measuring 3" wide by 2" tall in .038 aluminum or various gauges of steel.

Part: D-53WH | White

Box qty: 25 Pieces

Length: 20'



STEEL FRAMING

STEEL STUD BOTTOM CHANNEL

Bottom U channel for steel framing studs. Available to accommodate all gauges and stud widths.

Part: BC-35

Box qty: As required

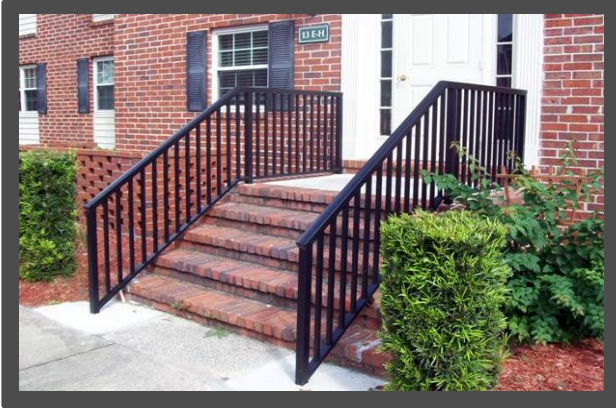
Length: 10'

No Photo Available

Mike Manufacturing Corp.

PORCH RAILING SYSTEMS

NEW PRODUCT



New porch railing packages from Mike Manufacturing feature proprietary extrusions and punched filler channel.

Contact us for details and pricing.